



**2016/2017 SNOW COLLECTION**



**RORY BUSHFIELD**  
PHOTO BRIAN NEVINS

# bern

- EST. 2004 -

You step onto the snow and hear that long awaited crunching sound while taking your first deep breath of clean, invigorating mountain air. There are no societal distractions, only the mountain and you. As you strap on or click in, you anticipate the great day to come. What is better than being on the mountain with your family and friends? As the lift rips you up the mountain, your senses and adrenalin are peaked in anticipation of that first morning run. Surrounded by smiles, you cut the first turns of the day.

Bern Unlimited's mission is to focus 100% on the highest valued head protection in the world. Our passion is backed by 25 years of experience in delivering differences for a heightened downhill adventure. We at Bern are dedicated to the skiing and boarding lifestyle and know that you are too. Our goal is to keep you safe while you're out there. Our products are more than simply a piece of equipment, we want them to be an integral part of our day. We combine style and comfort with safety, making a helmet that protects you like no other, and is also something that you want to wear.

Bern Unlimited is a private, family owned and operated business on a mission to focus on what matters most: you and your customers. Look to the 2016/2017 season as a successful step forward with new lids and goggles complimented by continued improvements to give you and your customers a value proposition that is unmatched in the industry. Enjoy the experience and get out there!

Dennis Leedom  
Founder and CEO





MACON  
PG 36

EASTWOOD  
PG 12

JULIAN CARR  
PHOTO: JEFF CRICCO

# CONTENTS

- 1 INTRO
- 2 CONTENTS
- 4 STYLE MATTERS

- 6 MEN & WOMEN
- 8 GOGGLES
- 10 PLUSFOAM
- 12 EASTWOOD
- 14 MONROE
- 16 JACKSON
- 18 JUNO

- 20 ZIPMOLD+
- 22 ROLLINS
- 24 HEPBURN
- 26 WESTON
- 28 BRISTOW

- 30 THINSHELL
- 32 WATTS
- 34 LENOX
- 36 MACON
- 38 BRIGHTON

- 40 TEAM FIT
- 42 TEAM MACON
- 44 TEAM BAKER
- 46 TEAM MUSE

- 48 JUNIORS
- 50 SAWYER
- 52 SCOUT
- 54 BREWSTER
- 56 BANDITO
- 58 BANDITA
- 60 DIABLO
- 62 DIABLA
- 64 CAMINO
- 66 CAMINA
- 68 WESTON JR
- 70 BRISTOW JR

- 72 AUDIO UPGRADES / LINERS
- 74 SHOP SUPPORT
- 76 COLLAGE
- 78 DISTRIBUTORS / SALES REPS
- 80 SIZE CHART
- 82 LINE AT A GLANCE
- 86 CLOSE



Bern is a leader, not an imitator or a follower. We are passionate about delivering authentic differences in our products that will genuinely enrich your experience while skiing or riding. As athletes ourselves, we are constantly pushing the envelope in the head protection category with innovations like our proprietary Zipmold+® helmets and 100% recyclable Plus Foam® goggles. When we develop a new product, our goal is to create a work of art that looks and feels like it was custom made for you. This is the Bern Difference.

# STYLE MATTERS

WILL WESSON  
PHOTO JOSH MALOZYK



# MEN & WOMEN

## DESIGNED FOR MEN AND WOMEN

When it comes to head protection, men and women are different. Women's heads are 1-2 sizes smaller [on average] than men's. To ensure the best possible fit for all genders, we provide smaller molds for women and larger molds for men. The resulting product has a customized low-profile fit that is catered to their individual head shape and size. We care about style too. The original women's models, the Lenox and Brighton have a softer, more curved vent pattern and shape than their male counterparts; the Watts and Macon. All of our colors, graphics and themes for both men and women are carefully and creatively developed taking inspiration from countless corners of the universe. Simply put, we offer an on-trend, high-quality product that is fit specifically for your individual head shape and size.

LINDSEY JACOBELLUS  
PHOTO COURT LEVE



KC DEANE  
PHOTO GRANT GUNDERSON



CLOUDY / PARTLY CLOUDY

CLOUDY / PARTLY CLOUDY

SUNNY / PARTLY CLOUDY

CLOUDY / PARTLY CLOUDY

SUNNY / PARTLY CLOUDY

SUNNY / PARTLY CLOUDY



## WE MAKE B.O.S. GOGGLES

B.O.S.™ (Bern Optic System) goggle technology is warped at just the right angle for unfettered peripheral and clear line of sight in a variety of conditions, repelling harmful glare and UV, for proper depth and terrain perception.

**YELLOW / BLUE MIRROR**

VLT : 70 %  
FILTER CATEGORY : 1

**ROSE MIRROR**

VLT : 62%  
FILTER CATEGORY : 1

**GOLD MIRROR**

VLT : 28%  
FILTER CATEGORY : 2

**ORANGE MIRROR**

VLT : 15%  
FILTER CATEGORY : 1

**GREY MIRROR**

VLT : 12 %  
FILTER CATEGORY : 1

**GREEN / BLUE MIRROR**

VLT : 9%  
FILTER CATEGORY : 1

# GOGGLES

MACON  
PG 36

JACKSON  
PG 17

**bern PROFILE**  
THINNER, LIGHTER, LOWER PROFILE



bern

THE COMPETITION

COMPARISON

### OUR DESIGN MANTRA

The Bern Profile is carried through into our new goggle collection—the low profile style that our customers expect. All of our goggles have been designed to fit seamlessly with our helmets creating those clean lines that Bern is known for. The smooth integration gives the customer a high-performance fit and comfortable feel so that they can ski or ride without that annoying gap.

ROBY BUSHFIELD  
PHOTO BRIAN NEVINS



JULIAN CARR  
PHOTO BRUNO LONG

MADE WITH  
**PLUSfoam®**

## INTRODUCING THE INDUSTRY'S FIRST GREEN GOGGLE FRAME

Bern has worked tirelessly over the span of two years to bring you our new goggle collection—as innovative and high-performance as our helmet collection. We have sourced the industry's first green goggle material that is 100% recyclable and the most lightweight foam available. The use of PLUSfoam® in our high-end Eastwood and Monroe frames truly is a revolutionary advancement in goggle technology and is in line with Bern's personal efforts to protect our planet.

### **WHY PLUSFOAM®?**

#### **Performance First**

PLUSfoam® material has been engineered to outperform traditional foams, rubbers and plastics. PLUSfoam® offers higher impact resistance, has a higher coefficient of friction, responds better in extreme climates, and is 100% recyclable.

### **FIT AND FEEL**

PLUSfoam® forms to your face. This is the first goggle that you can break in like a boot. The frames flex and move while not creating air gaps like stiff, traditional TPU frames. The frame is lighter than any other model in its price point.

### **ENVIRONMENTALLY FRIENDLY**

No manufacturing waste and zero post-consumer waste. Any product made using PLUSfoam® is recyclable and our team manages consumer reclaim for all of our brand partners. Visit our reclaim page to see what is currently in market.



NEW



Muted Teal

Lens Included: Gold Light Mirror, Grey Light Mirror



Black/Black

Lens Included: Grey Light Mirror, Orange Light Mirror



Army

Lens Included: Orange Light Mirror, Grey Light Mirror



Grey/Black

Lens Included: Grey Light Mirror, Orange Light Mirror

# EASTWOOD

LARGE AND MEDIUM FRAME

MEN

## BACKSTORY

The Eastwood is designed for optimized view, performance and seamless fit with all Bern adult helmets. Lens Pop, quick release for easy lens change with burly outriggers that help lock in helmet fit for perfect symmetry-no gaper gap. This is Bern's largest frame, with spherical lenses, providing a maximized field of vision. Using recyclable Plusfoam, this is the industry's first true eco-friendly goggle with a revolutionary break from traditions materials. Durable, light, and stylish, the Eastwood comes with 2 lenses.



SIZE  
LARGE FRAME  
MEDIUM FRAME

WEIGHT  
108 - 113.6g

\*NEW FOR WINTER 1617

Medium frame PLUSfoam® goggle.

\*Includes goggle bag and secondary lens

PLUSfoam

Frame is 100% recyclable. Industry exclusive material. Lightweight with a soft, ergonomic, fit and feel.

LENS POP

Fast change lens system with 7 retention points to allow for safe and easy adjustment to environmental lighting changes.

B.O.S.

B.O.S.™ (Bern Optic System) Unfettered peripheral and clear line of sight in a variety of conditions, repelling harmful glare and UV, for proper depth and terrain perception.





Grey/Purple  
Lens Included: Green/Blue Light Mirror, Grey Light Mirror



Rainbow  
Lens Included: Yellow/Blue Light Mirror, Grey Light Mirror



White Sprinkles  
Lens Included: Rose Light Mirror, Grey Light Mirror

# MONROE

LARGE AND MEDIUM FRAME

WOMEN

## BACKSTORY

The Monroe is designed for optimized view, performance and seamless fit with all of Bern adult helmets. Lens Pop, quick release for easy lens change with burly outriggers that help lock in helmet fit for perfect symmetry-no gaper gap. This is Bern's largest frame, with spherical lenses, providing a maximized field of vision. Using recyclable Plusfoam, this is the industry's first true eco-friendly goggle with a revolutionary break from traditions materials. Durable, light, and stylish, the Monroe comes with 2 lenses



**\*NEW FOR WINTER 1617**  
Medium frame PLUSfoam® goggle.

\*Includes goggle bag and secondary lens

**SIZE**  
LARGE FRAME  
MEDIUM FRAME

**WEIGHT**  
108 - 113.6g

**PLUSfoam**

Frame is 100% recyclable. Industry exclusive material. Lightweight with a soft, ergonomic, fit and feel.

**LENS POP**

Fast change lens system with 7 retention points to allow for safe and easy adjustment to environmental lighting changes.

**B.O.S.**

B.O.S.™ (Bern Optic System) Unfettered peripheral and clear line of sight in a variety of conditions, repelling harmful glare and UV, for proper depth and terrain perception.

# JACKSON

MEDIUM FRAME

**MEN**

## BACKSTORY

The Jackson goggle is our traditional mid-size frame, with a rimless Pop-Lens design. The spherical lens is slightly oversized and has a very wide range of peripheral vision, while still maintaining a smaller frame against your face. It is ideal for someone looking for a smaller frame size or that has a smaller head size. The Jackson features mesh vent covers which are much stronger than traditional foam and won't blow out. The strap is also connected right to the frame without outriggers for maximum durability. The Jackson is made to take abuse through multiple seasons and look good while doing it.



**SIZE**  
MEDIUM FRAME

**WEIGHT**  
122.4 g

\*Includes goggle bag.



B.O.S.™ (Bern Optic System) Unfettered peripheral and clear line of sight in a variety of conditions, repelling harmful glare and UV, for proper depth and terrain perception.



Fast change lens system with 8 retention points to allow for safe and easy adjustment to environmental lighting changes.



Hunter Green  
Lens Included: Gold Light Mirror

Black/Dark Grey  
Lens Included: Yellow/Blue Light Mirror

Grey/Black  
Lens Included: Orange Light Mirror



Muted Teal  
Lens Included: Gold Light Mirror

Grey/Orange  
Lens Included: Grey Light Mirror



Grey/Purple  
Lens Included: Green/Blue Light Mirror



White/Teal  
Lens Included: Yellow/Blue Light Mirror

NEW



Fair Isle  
Lens Included: Orange Light Mirror



Black/Gold  
Lens Included: Gold Light Mirror

# JUNO

WOMEN'S MEDIUM FRAME

WOMEN

## BACKSTORY

The Juno goggle is our traditional mid-size frame, with a rimless Pop-Lens design for women. The spherical lens is slightly oversized and has a very wide range of peripheral vision, while still maintaining a smaller frame against your face. It is ideal for someone looking for a smaller frame size or that has a smaller head size. The Jackson features mesh vent covers which are much stronger than traditional foam and won't blow out. The strap is also connected right to the frame without outriggers for maximum durability. The Jackson is made to take abuse through multiple seasons and look good while doing it.



SIZE  
MEDIUM FRAME

WEIGHT  
122.4 g

\*Includes goggle bag.



B.O.S.™ (Bern Optic System) Unfettered peripheral and clear line of sight in a variety of conditions, repelling harmful glare and UV, for proper depth and terrain perception.



Fast change lens system with 8 retention points to allow for safe and easy adjustment to environmental lighting changes.

## NEW WINTER LINER UPGRADES

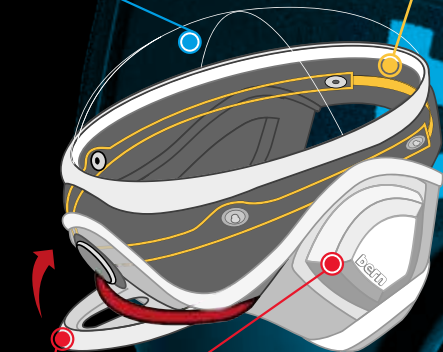
Bern's custom Boa Technology. Now with 360° of adjustability. Wrapped in our soft and warm winter liner.



Tricot top knit beanie.

bern

bern



Outdoor Tech Drop in Wireless Audio Hidden Cord Storage.

\*Available in Rollins, Hepburn

## ZIP MOLD+

### PROPRIETARY LIQUID FOAM TECHNOLOGY WITH A PREMIUM FIT & FINISH

Bern's exclusive Zipmold+® technology has changed the way we look at modern helmet production. The revolutionary manufacturing process starts with a micro-layer of PVC that is injected with Berns proprietary liquid Zipmold® foam which hardens as it cools. The resulting product has a smooth exterior finish and is extremely lightweight and low-profile.

- Tapered edges and rounded vents create a polished look and feel.
- Extremely High Strength-to-Weight Ratio compared with traditional EPS Foam construction.
- Less material waste compared with traditional manufacturing processes.
- Wide range of shell sizes to fit men, women and kids head shapes and design aesthetic.
- Zipmold+® Hard Foam meets ASTM F 2040, CPSC, EN 1077B and EN1078 standards for non-motorized action sports.

# ZIPMOLD+



CHAD HENDREN  
PHOTO ANDREW DORAN



Matte Black  
Black Premium Liner



Matte Fatigue Green  
Black Premium Liner

NEW



Satin White  
Black Premium Liner



Matte Dark Grey Camo  
Black Premium Liner



Matte Muted Teal  
Black Premium Liner

NEW

# ROLLINS

MEN

## BACKSTORY

Evolving from our strong sense of urban street-style, the Rollins is the snow specific helmet in our lineup. Featuring the integrated patent pending Stealth Slider vents, a venting system that is hidden inside the helmet to avoid the dreaded ice up, our signature "Sink Fit" and unique "Chine Line" construction, make this one of the lowest volume slider helmets on the market. Our founder DL's personal favorite- the Rollins-fighting the good fight against large, dorky looking snow helmets!



## SIZE

S-M  
L-XL  
XXL-XXXL

## WEIGHT

475 g

## STANDARDS

CPSC  
ASTM F 2040  
EN 1077B  
EN 1078

\*Shown with Eastwood goggle. See page 12

ZIP MOLD+

Thinner, tapered, lighter, with a higher strength to weight ratio than in-mold.



Cold weather liner with micro adjustable fit system. Drop in audio compatible.

STEALTH SLIDER  
Patent Pending

Hidden internal adjustable vent slider with set and forget functionality.



Satin Fuchsia Acid Wash  
Black Premium Liner



Satin Delphin Grey  
Grey Premium Liner



Satin Black  
Black Premium Liner



NEW

Satin White  
Grey Premium Liner



NEW

Satin Bright Blue  
Grey Premium Liner

### BACKSTORY

Designed for women who appreciate good style and ride the whole mountain, the Bern Hepburn is a snow specific helmet in our female lineup. As always, Bern is setting the standard for stylish functionality. We put as much technology into safety as we do fit. The HEPBURN keeps our signature low-profile design, and has 10 high-flow vents with our sleek patent pending internal Stealth Slider - that will keep you keep your cool. In short, less bobble-head effect, look great while staying safe!



# HEPBURN

WOMEN

### SIZE

XS-S  
M-L

### WEIGHT

475 g

### STANDARDS

CPSC  
ASTM F 2040  
EN 1077B  
EN 1078

\*Shown with Monroe goggle. See page 14

ZIP MOLD+

Thinner, tapered, lighter, with a higher strength to weight ratio than in-mold.



Cold weather liner with micro adjustable fit system. Drop in audio compatible.

STEALTH SLIDER  
Patent Pending

Hidden internal adjustable vent slider with set and forget functionality.

**MEN**

**SIZE**  
S-M  
L-XL  
XXL-XXXL

**WEIGHT**  
400g

**STANDARDS**  
CPSC  
ASTM F 2040  
EN 1077B  
EN 1078

### BACKSTORY

The goal of the Weston is to offer a brimless, clean, ultra-lightweight vented and easy to fit snow specific lid, which has seamless Bern Goggle integration at a price point that will shock you it is so low. The Weston features exclusive premium Zip Mold Plus with Easy Crank Fit Adjustment complete with goggle Airflow channels. The core 50+ day a year shredder that just wants a good workhorse helmet, with style. A Zipmold lid at this price point is something we've been asked about for several years and the Weston will deliver!



\*Shown with Jackson goggle. See page 16



All New model for Winter 16/17.



Thinner, tapered, lighter, with a higher strength to weight ratio than in-mold.



Customized fit with performance moisture control and airflow.



**NEW**

Matte Black  
Black Canvas



**NEW**

Matte Grey  
Black Canvas



**NEW**

Satin Hunter  
Black Canvas



**NEW**

Matte Oxblood  
Black Canvas



NEW

Satin Black  
Black Canvas



NEW

Satin Atlantic Blue  
Grey Canvas



NEW

Satin Cranberry  
Black Canvas



NEW

Satin White  
Grey Canvas

# BRISTOW

WOMEN

## BACKSTORY

Hitting the Bern runway for Winter 16, the new subtle, lightweight helmet for skiers and riders that does not break the bank, made with our best technology. The goal of the Bristow is to offer a brimless, clean, ultra-lightweight vented and easy to fit snow specific lid, which has seamless Bern Goggle integration at a price point that will shock you it is so low. The Bristow features exclusive premium Zip Mold Plus with easy Crank Fit Adjustment complete with goggle airflow channels.



SIZE  
XS-S  
M-L

WEIGHT  
400g

STANDARDS  
CPSC  
ASTM F 2040  
EN 1077B  
EN 1078

\*Shown with Juno goggle. See page 18



All New model for Winter 16/17.



Thinner, tapered, lighter, with a higher strength to weight ratio than in-mold.



Customized fit with performance moisture control and airflow.

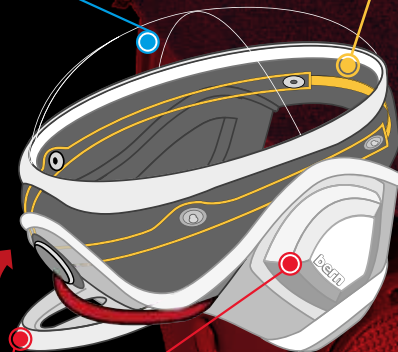


## NEW WINTER LINER UPGRADES

Bern's custom Boa Technology. Now with 360° of adjustability. Wrapped in our soft and warm winter liner.



Tricot top knit beanie.



Outdoor Tech Drop in Wireless Audio Hidden Cord Storage.

\*Available in Watts, Lenox, Macon, Brighton

# THINSHELL

SETH WESCOTT  
PHOTO MIKE ARZT

## thin SHELL WITH EPS FOAM

ABS hard shell exterior with E.P.S. (Expanded Polystyrene) interior liner; the tried and true construction in head protection. Thin Shell Technology with E.P.S. impact foam captures the ideal balance between the thickness of the shell and the impact foam, resulting in the most low profile Hard Shell helmet available. We developed this construction using denser polymers and plastics in the interior and exterior materials to increase the strength of the impact foam, all while cutting out as much unnecessary bulk and weight as possible. The resulting product is the thinnest two-piece EPS helmet in the game.



Matte Black  
Black Premium Liner



Matte Grey  
Black Premium Liner



Satin Orange  
Black Premium Liner

NEW



Matte Navy  
Black Premium Liner



Matte Leaf Green  
Black Premium Liner

Also available with  
**stracks**  
BERN AUDIO KNIT

# WATTS

## BACKSTORY

To build on our legendary Baker helmet we developed a vented version, the Watts. The Watts changed the visor helmet game, and is our most popular men's lid for crossing over from snow to bike, resulting in a true game changer for all seasons.



MEN

SIZE  
S-M  
L-XL  
XXL-XXXL

WEIGHT  
460-495 g

STANDARDS  
CPSC  
ASTM F 2040  
EN 1077B  
EN 1078

\*Shown with Jackson goggle. See page 16

thin SHELL

A thin ABS shell lined with EPS foam to create a burly lightweight All Season™ lid.



Cold weather liner with micro adjustable fit system. Drop in audio compatible.

the original

The Original Visor Shape that set the trend.

NEW



Satin White  
Grey Premium Liner



Satin Black  
Black Premium Liner



Satin Aqua  
Grey Premium Liner

NEW



Satin Navy Blue  
Grey Premium Liner



Satin Delphin Grey  
Grey Premium Liner

# LENOX

WOMEN

### BACKSTORY

The Lenox is for ladies who want and deserve it all: style, fit and safety. We set out to take the iconic design of the Watts and sculpt/engineer a lid for women. The Lenox features a smaller and lower profile shell specific for women with a vent theme similar to the Brighton- with softer more feminine styled lines. You can throw a visor on any helmet, but what Bern has done from the start, is put as much effort into style as safety. With the Lenox, we created a performance helmet that sits low, fits close, and looks good... because style matters!



SIZE  
XS-S  
M-L

WEIGHT  
450 g

STANDARDS  
CPSC  
ASTM F 2040  
EN 1077B  
EN 1078

\*Shown with Juno goggle. See page 18

thin SHELL

A thin ABS shell lined with EPS foam to create a burly lightweight All Season™ lid.



Cold weather liner with micro adjustable fit system. Drop in audio compatible.

the original

The Original Visor Shape that set the trend.



Matte Black  
Black Premium Liner

Also available with  
**8tracks**  
BERN AUDIO KNIT



Matte Oxblood  
Black Premium Liner

NEW



Matte Muted Teal  
Black Premium Liner

NEW



Matte Hunter Green  
Black Premium Liner

NEW

# MACON

MEN

## BACKSTORY

The Macon is a world class skate lid. It has transformed into one of our most popular models, especially for snow. Featuring multiple shell sizes to maximize fit, with Bern's original hard shell profile and iconic signature skate look, it is the top choice of skiers like Henrik Harlaut as well as top skate and snowboard professionals like Andy Mac and Cam Fitzpatrick, who want a core lid with skate appeal for all seasons.



SIZE  
S-M  
L-XL  
XXL-XXXL

WEIGHT  
435-470 g

STANDARDS  
CPSC  
ASTM F 2040  
EN 1077B  
EN 1078

\*Shown with Eastwood goggle. See page 12



A thin ABS shell lined with EPS foam to create a burly lightweight All Season™ lid.



Cold weather liner with micro adjustable fit system. Drop in audio compatible.



Matte Black  
Black Premium Liner



Gloss White  
Grey Premium Liner



Satin Hot Pink  
Grey Premium Liner



Satin Seatoam  
Grey Premium Liner

# BRIGHTON

## BACKSTORY

With the Brighton, Bern developed the first world class skate style lid specifically made for women and compatible for all seasons. The Brighton uses a simple, skate-inspired silhouette and combats big helmet head with classic, clean and subtle lines. We can't guarantee you won't have helmet hair when you arrive at your destination, but the Brighton will have you looking good.



WOMEN

SIZE  
XS-S  
M-L

WEIGHT  
450 g

STANDARDS  
CPSC  
ASTM F 2040  
EN 1077B  
EN 1078

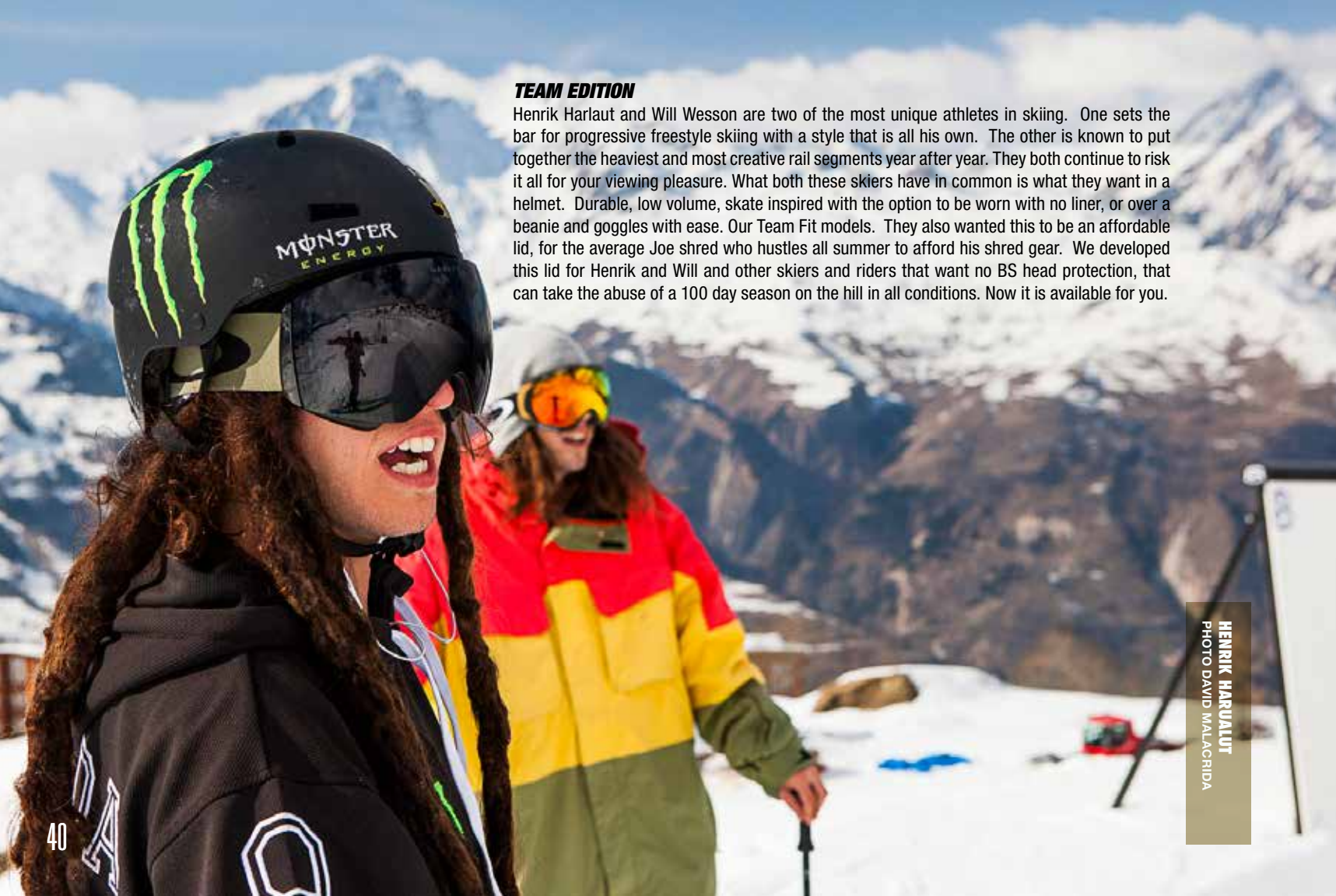
\*Shown with Monroe goggle. See page 14



A thin ABS shell lined with EPS foam to create a burly lightweight All Season™ lid.



Cold weather liner with micro adjustable fit system. Drop in audio compatible.



**TEAM EDITION**

Henrik Harlaut and Will Wesson are two of the most unique athletes in skiing. One sets the bar for progressive freestyle skiing with a style that is all his own. The other is known to put together the heaviest and most creative rail segments year after year. They both continue to risk it all for your viewing pleasure. What both these skiers have in common is what they want in a helmet. Durable, low volume, skate inspired with the option to be worn with no liner, or over a beanie and goggles with ease. Our Team Fit models. They also wanted this to be an affordable lid, for the average Joe shred who hustles all summer to afford his shred gear. We developed this lid for Henrik and Will and other skiers and riders that want no BS head protection, that can take the abuse of a 100 day season on the hill in all conditions. Now it is available for you.

HENRIK HARLAUT  
PHOTO DAVID MALACRIDA



**TEAM FIT**

WILL WESSON



NEW

Matte Black  
Black Cordova Earpads



NEW

Matte Grey  
Black Cordova Earpads



NEW

Matte Neon Green  
Black Cordova Earpads



NEW

Gloss Black Henrik Harlaut  
Black Cordova Earpads



# TEAM MACON

MEN



SIZE  
S  
M  
L  
XL  
XXL

WEIGHT  
425-440 g

STANDARDS  
CPSC  
ASTM F 2040  
EN 1077B  
EN 1078

\*Shown with Jackson goggle. See page 16

thin SHELL

A thin ABS shell lined with EPS foam to create a burly lightweight All Season™ lid.

TEAM EDITION

Now with fully upholstered interior for a performance fit.



Matte Black  
Black Cordova Earpads



Matte Grey  
Black Cordova Earpads



Matte Orange 2-Tone  
Black Cordova Earpads



Matte Cyan 2-Tone  
Black Cordova Earpads



Matte Hunter Green 2-Tone  
Black Cordova Earpads

NEW

NEW

NEW

NEW

# TEAM BAKER

**MEN**



**SIZE**  
S  
M  
L  
XL

**WEIGHT**  
440 g

**STANDARDS**  
CPSC  
ASTM F 2040  
EN 1077B  
EN 1078

\*Shown with Eastwood goggle. See page 12

thinSHELL

A thin ABS shell lined with EPS foam to create a burly lightweight All Season™ lid.

**TEAM EDITION**

Now with fully upholstered interior for a performance fit.

*the original*

The Original Visor Shape that set the trend.



NEW



Satin Black  
Black Cordova Earpads

NEW



Satin Light Grey  
White Cordova Earpads

NEW



Satin Aqua  
White Cordova Earpads

NEW



Satin Ocean Blue  
White Cordova Earpads

NEW



Satin White Ice Cream  
White Cordova Earpads



# TEAM MUSE

WOMEN

SIZE  
S  
M  
L

WEIGHT  
440 g

STANDARDS  
CPSC  
ASTM F 2040  
EN 1077B  
EN 1078

\*NEW FOR WINTER 1617

\*Shown with Monroe goggle. See page 14

thinSHELL

A thin ABS shell lined with EPS foam to create a burly lightweight All Season™ lid.

TEAM EDITION

Now with fully upholstered interior for a performance fit.

the original

The Original Visor Shape that set the trend.



PHOTOS CASEY DAY  
COLORADO SKI PHOTOGRAPHY



# **JUNIORS**

**(AGES 3-15)**

## **DESIGNED FOR KIDS**

Bern has always been known for our high quality product for kids. We set the bar high and have always used the same high end materials in our kids products as we do in our adults. We do not create 'one size fits all product' for the youth market. Since fit equals safety we have multiple shell sizes and multiple models with improved adjustability to provide the absolute perfect fit for grom shredders. Kids are pushing themselves and charging harder every year, so they need the same high standard of product as their parents. Bern delivers again this season with the new Weston JR and Bristow JR models and our Scout, Sawyer and Brewster goggles. The same low volume, low profile fit and feel with our signature design direction for the youth.

# SAWYER

SMALL FRAME

**BOYS**



Black/Red  
Lens Included: Orange Light Mirror



Charcoal/Grey Creature Feature  
Lens Included: Orange Light Mirror



Neon Green  
Lens Included: Yellow/Blue Light Mirror



Neon Yellow/Grey  
Lens Included: Yellow/Blue Light Mirror

## BACKSTORY

The Sawyer youth goggle for boys combines premium spherical lenses and a burly frame. Modern adult style with a slightly oversized frame, these are not cheap-o kids goggles. We made sure they hit all the technical marks for the young shredders. The frame and lens size allows for eyeglasses and the performance anti-fog coating with multiple lens tint options make this one of the best youth goggles in the game. Plus, they will fit a lot of adults, so they have that going for them too...



**SIZE**  
SMALL FRAME

**WEIGHT**  
104 g

\*Includes goggle bag.



B.O.S.™ (Bern Optic System) Unfettered peripheral and clear line of sight in a variety of conditions, repelling harmful glare and UV, for proper depth and terrain perception.



Pairs with any Bern helmet for seamless Bern Style.

NEW



White Fair Isle  
Lens Included: Rose Light Mirror



Fuchsia/Purple  
Lens Included: Rose Light Mirror

NEW



White/Yellow  
Lens Included: Yellow/Blue Light Mirror



Blue Snowflake  
Lens Included: Yellow/Blue Light Mirror

# SCOUT

SMALL FRAME

GIRLS

## BACKSTORY

The Scout youth goggle for girl, combines premium spherical lenses and a burly frame. Modern adult style with a slightly oversized frame, these are not cheap-o kids goggles. We made sure they hit all the technical marks for the young shredders. The frame and lens size allows for eyeglasses and the performance anti-fog coating with multiple lens tint options make this one of the best youth goggles in the game. Plus, they will fit a lot of adults, so they have that going for them too...



SIZE  
SMALL FRAME

WEIGHT  
104 g

\*Includes goggle bag.



B.O.S.™ (Bern Optic System) Unfettered peripheral and clear line of sight in a variety of conditions, repelling harmful glare and UV, for proper depth and terrain perception.



Pairs with any Bern helmet for seamless Bern Style.



Black/Red  
Lens Included: Orange



Navy  
Lens Included: Orange



Neon Green  
Lens Included: Orange



Powder Blue  
Lens Included: Rose



White  
Lens Included: Rose

# BREWSTER

XS FRAME

**KIDS**

## BACKSTORY

The Brewster, Bern's uni-sex goggle is our price point offering for kids. With a cylindrical and durable frame and strap this goggle is great for entry level youth skiers and riders who are tougher on their lens and product. Still maintaining Bern's quality and signature low volume fit and feel, just at a more affordable price, that will stand up to heavy use season after season.



**SIZE**  
XS FRAME

**WEIGHT**  
91.5 g



All New model for Winter 16/17.



Cylindrical lens available in 2 lens tints.



Pairs with any Bern helmet for seamless Bern Style.



Matte Black Baseball  
Black Cordova



Matte Muted Teal  
Black Cordova



Matte Hunter Green  
Black Cordova



Matte Red  
Black Cordova

NEW

NEW

NEW

# BANDITO

AGES 8-15

BOYS

## BACKSTORY

The visor helmet for the youth. Today's young skier and riders want the same style as adults. Probably because half of them shred harder than their parents! So Bern created the Bandito, all the style of the adult watts helmet, in youth sizes and price points. This helmet can also be used in the spring and summer seasons, on a bike or skateboard as it features removable earpads for warm weather and a top pad that rotates for customized ventilation.



**SIZE**  
S-M (AGE 8-12)  
54-57cm

M-L (AGE 12-15)  
55.5-59cm

**WEIGHT**  
476g

**STANDARDS**  
CPSC  
ASTM F 2040  
EN 1077B  
EN 1078

\*Shown with Sawyer goggle. See page 50

thin SHELL

A thin ABS or polycarbonate shell lined with EPS hard foam to create a burly lightweight All Season™ lid.



All Season™ top pad rotates to function as a vent cover in cold weather.



Customized fit with performance moisture control and airflow.

NEW



Satin White Polar Bear  
White Cordova

NEW



Satin Mint Green  
White Cordova



Satin Light Blue  
White Cordova



Satin Pink  
White Cordova

# BANDITA

AGES 8-15

GIRLS

## BACKSTORY

The visor helmet for the young lady, who wants the same style as her adult counterparts. Bern created the Bandita, with all the mature style of our adult Lenox, in youth sizes and price points. This helmet can also be used in the spring and summer seasons, on a bike or skateboard as it features removable earpads for warm weather and a top pad that rotates for customized ventilation.



**SIZE**  
S-M (AGE 8-12)  
54-57cm

M-L (AGE 12-15)  
55.5-59cm

**WEIGHT**  
476g

**STANDARDS**  
CPSC  
ASTM F 2040  
EN 1077B  
EN 1078

\*Shown with Juno goggle. See page 18

thin SHELL

A thin ABS or polycarbonate shell lined with EPS hard foam to create a burly lightweight All Season™ lid.



All Season™ top pad rotates to function as a vent cover in cold weather.



Customized fit with performance moisture control and airflow.



Matte Black  
Black Cordova



Matte Blue  
Black Cordova



Translucent Neon Green  
Black Cordova

### BACKSTORY

Keep your young shred safe in a Diablo helmet. Skate influenced, with a clean look that is geared towards mature style. A lightweight, thin, polycarbonate shell with an EPS foam liner gives it a burly, durable finish. The value for parents is that your grom can also use this helmet in the spring and summer seasons, on his bike or skateboard- as it features removable earpads for warm weather and a top pad that rotates for customized ventilation.

\*Shown with Sawyer goggle. See page 50

# DIABLO

AGES 8-15

**BOYS**



### SIZE

- S 51.5-53cm
- M 53.5-55cm
- L 55.5-57cm

### WEIGHT

435-480 g

### STANDARDS

- CPSC
- ASTM F 2040
- EN 1077B
- EN 1078

thinSHELL

A thin ABS or polycarbonate shell lined with EPS hard foam to create a burly lightweight All Season™ lid.



All Season™ top pad rotates to function as a vent cover in cold weather.

**TEAM FIT**

Now with fitted non adjustable Team Fit.





Satin White  
Black Cordova



Translucent Pink  
White Cordova



Translucent Cyan Blue  
White Cordova

### BACKSTORY

Safe skate style, for young female shredders. She will look good on and off the hill with a clean look that is geared towards mature style. A light-weight, thin, polycarbonate shell with an EPS foam liner gives it a burly, durable finish. The value for parents is that this helmet can also be used in the spring and summer seasons. She can ride her bike or cruise the skate-park- as it features removable earpads for warm weather and a top pad that rotates for customized ventilation.



# DIABLA

AGES 8-15

**GIRLS**

**SIZE**  
S 51.5-53cm  
M 53.5-55cm  
L 55.5-57cm

**WEIGHT**  
435-480 g

**STANDARDS**  
CPSC  
ASTM F 2040  
EN 1077B  
EN 1078

\*Shown with Scout goggle. See page 52

thin SHELL

A thin ABS or polycarbonate shell lined with EPS hard foam to create a burly lightweight All Season™ lid.



All Season™ top pad rotates to function as a vent cover in cold weather.

**TEAM FIT**

Now with fitted non adjustable Team Fit.



Matte Black  
Black Cordova



Satin Cobalt Blue  
Black Cordova



Satin Orange  
Black Cordova



NEW

Matte Fatigue Camo  
Black Cordova



NEW

Satin Grey Flying Tiger  
Black Cordova

### BACKSTORY

Kids are charging harder and taking more risks than ever. So it's that much more important that your kids love and wear their helmets. Bern is known for making some of the highest quality kids product in the game and the Camino is no different. Bern believes that kids helmets should be made to the same high quality standards as their adult counterparts, and the Camino boasts our proprietary Zip Mold Plus construction.



# CAMINO

AGES 6-12

KIDS

### SIZE

XS-S (AGE 6-8)  
51-53cm

S-M (AGE 8-12)  
53-55.5cm

### WEIGHT

410 g

### STANDARDS

CPSC  
ASTM F 2040  
EN 1077B  
EN 1078

\*Shown with Brewster goggle. See page 54

ZIP MOLD+

Thinner, tapered, lighter,  
with a higher strength to  
weight ratio than in-mold.

CRANK  
FIT

Customized fit with perfor-  
mance moisture control and  
airflow.

NEW



Satin White Snowflake  
White Cordova

NEW



Satin Blue Snowflake  
White Cordova

NEW



Satin White Fair Isle  
White Cordova



Satin Pink  
White Cordova



Satin Aqua  
White Cordova

### BACKSTORY

Bern is known for making some of the highest quality kids product in the game and the Camina is no different. Bern believes that kids helmets should be made to the same high quality standards as their adult counterparts, and the Camina boasts our proprietary Zip Mold Plus construction. We've taken style for girls to the next level with the new colorway in this year's Camina, especially when paired with our girls Scout goggles.

\*Shown with Brewster goggle. See page 54

# CAMINA

AGES 6-12

KIDS



### SIZE

XS-S (AGE 6-8)  
51-53cm

S-M (AGE 8-12)  
53-55.5cm

### WEIGHT

410 g

### STANDARDS

CPSC  
ASTM F 2040  
EN 1077B  
EN 1078

ZIP MOLD+

Thinner, tapered, lighter,  
with a higher strength to  
weight ratio than in-mold.

CRANK  
FIT

Customized fit with perfor-  
mance moisture control and  
airflow.



NEW

Matte Black  
Black Cordova



NEW

Matte Grey  
Black Cordova



NEW

Matte Cobalt Blue  
Black Cordova



NEW

Matte Neon Green  
Black Cordova

# WESTON JR

AGES 6-12

KIDS

## BACKSTORY

The Goal of the Weston Jr is to offer an EU Cert Premium Zipmold lid for kids that complements Bern's Game Changing Nino/ Nina summer lid. The Weston Jr has all the same features of the adult version at a value unmatched in the industry. The result is the cute test and coolest Kids brimless lid. What can we say, if it's good enough for Dad...it's gonna look even cooler on Junior...



**SIZE**  
XS-S (AGE 6-8)  
51-53cm

S-M (AGE 8-12)  
53-55.5cm

**WEIGHT**  
380 g

**STANDARDS**  
CPSC  
ASTM F 2040  
EN 1077B  
EN 1078

\*Shown with Sawyer goggle. See page 50



All New model for Winter 16/17.



Thinner, tapered, lighter, with a higher strength to weight ratio than in-mold.



Customized fit with performance moisture control and airflow.



NEW

Satin Navy Blue Fair Isle  
White Cordova



NEW

Satin Cyan Blue  
White Cordova



NEW

Satin Bright Purple  
White Cordova



NEW

Satin White  
White Cordova

# BRISTOW JR

AGES 6-12

KIDS

## BACKSTORY

The Goal of the Bristow Jr is to offer an EU Cert Premium Zipmold lid for kids that complements Bern's Game Changing Nino/ Nina summer lid. The Bristow Jr has all the same features of the adult version at a value unmatched in the industry. The result is the cute test and coolest kids brimless lid. So that she won't try to steal your helmet, Style she'll love at a price that leaves some \$\$ for lunch!



**SIZE**  
XS-S (AGE 6-8)  
51-53cm

S-M (AGE 8-12)  
53-55.5cm

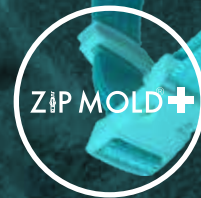
**WEIGHT**  
380 g

**STANDARDS**  
CPSC  
ASTM F 2040  
EN 1077B  
EN 1078

\*Shown with Scout goggle. See page 52



All New model for Winter 16/17.



Thinner, tapered, lighter, with a higher strength to weight ratio than in-mold.



Customized fit with performance moisture control and airflow.

# AUDIO



Men's  
8tracks  
Black Audio Knit



Women's  
8tracks  
White Audio Knit



**8tracks**  
BERN AUDIO KNIT

# bern x OUTDOOR TECH.



Premium Knit  
Wireless Audio Ready

 Bluetooth™



Men's Upgrades Packaging



Women's Upgrades Packaging

# ALL SEASON UPGRADES/LINERS



Summer Liner



Summer Visor



Winter Knit

WARM

COLD



Summer Liner



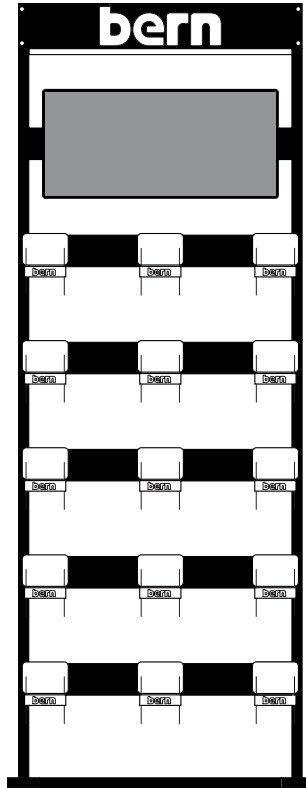
Summer Visor



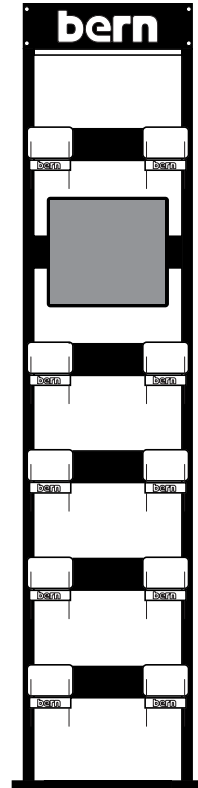
Winter Knit

- Go from warm weather to cold weather riding seamlessly!
- Liners snap in and out of any model with ease.
- All Season Models: Macon, Watts, Brighton, Lenox, Bandito, Bandita, Diablo, Diabla

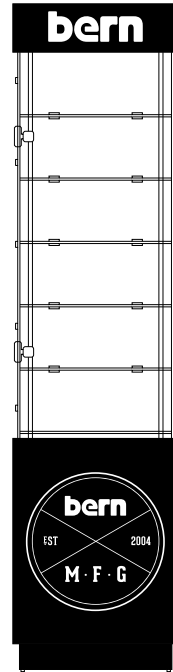
# SHOP SUPPORT



**30 UNIT HELMET DISPLAY**  
**15 UNITS PER SIDE**  
 26" Wide X 73" Tall X 36" Deep  
 66cm Wide X 186cm Tall X 91.4cm Deep



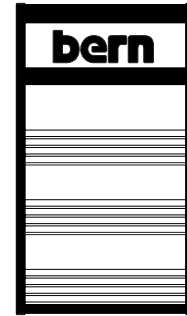
**20 UNIT HELMET DISPLAY**  
**10 UNITS PER SIDE**  
 15.75" Wide X 73" Tall X 27.5" Deep  
 40cm Wide X 186cm Tall X 70cm Deep



**GOGGLE DISPLAY**  
**Can hold 24 units**  
 15.75" Wide X 73" Tall X 27.5" Deep  
 40cm Wide X 162.5cm Tall X 28cm Deep



SLAT WALL HANGER



**COUNTERTOP GOGGLE DISPLAY**  
 17.71" Wide X 32.28" Tall X 17.71" Deep  
 45cm Wide X 82cm Tall X 45cm Deep



**LASER CUT LOGO SIGN**  
 Available in 22"x12"  
 56cm X 30.5cm  
 Stainless Steel with Grommets



**GIFT BOX**  
 Pin, Bottle Opener, Keychain,  
 Under Helmet Berniclava



**LOGO BANNERS**  
 Available in 80"x40"  
 203cm X 101cm  
 Vinyl, Weatherproof with Grommets



**1 LID BOW**  
**Can hold 4 units**  
 19" Wide X 82" Tall  
 48cm Wide X 208cm Tall



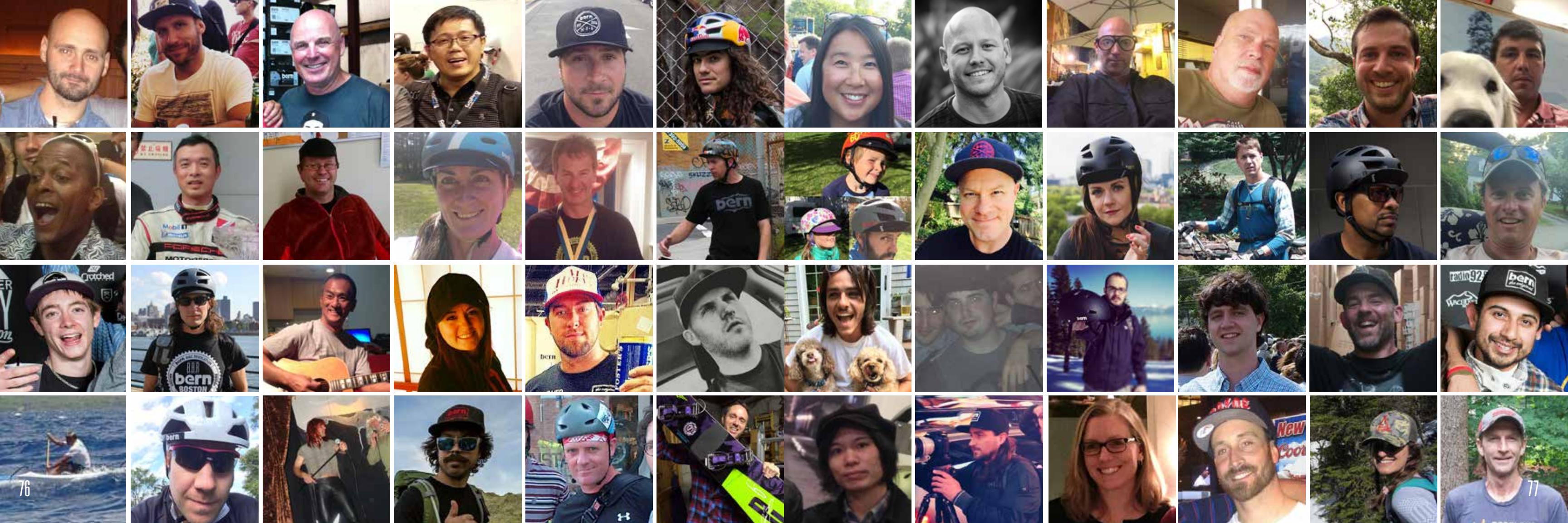
**2 LID BOW**  
**Can hold 8 units**  
 24" Wide X 82" Tall  
 61cm Wide X 208cm Tall



**3 LID BOW**  
**Can hold 12 units**  
 29" Wide X 82" Tall  
 73.5cm Wide X 208cm Tall



**4 LID BOW**  
**Can hold 16 units**  
 34" Wide X 82" Tall  
 86.5cm Wide X 208cm Tall





## USA SALES REPRESENTATIVES

### WORLD HQ

SNOW BIKE SKATE H2O  
P.O. Box 1284  
Duxbury, MA 02331  
Tel: 781.582.8125  
Fax: 781.582.8124  
connect@bernunlimited.com  
bernunlimited.com

### NEW ENGLAND

ME, VT, NH, MA, CT, RI  
**Stoner Andrews**  
office@stonerandrews.com  
(802) 598-0274

### MID-ATLANTIC

NY, NJ, PA, DE, MD, DC  
**John Phaneuf**  
P: 203-262-6857  
E: jrphaneuf@sbcglobal.net

### SOUTHEAST

VA, WV, NC, TN  
**Harrison Montgomery**  
P: 703.622.2818  
E: montyreprsnow@gmail.com

### WESTERN/EASTERN

**GREAT LAKES**  
MN, WI, IL, ND, SD, KS, MO, NE, IA, OK  
ALSO FL, TX  
**Brendan Donarum**  
P: 203.627.2616  
E: bdonarum@bernunlimited.com

### ROCKIES

CO, NM, UT, ID, WY  
**Kahl and Partners**  
P: 303-748-2548  
E: doug@kahlandpartners.com

### NORTHWEST - SNOW

WA, OR, MT, AK  
**Joey Weamer**  
P: 406.360.2547  
E: joey.weamer@gmail.com

### NORTHERN CALIFORNIA

**Dave Bluestein**  
P: 530.913.4749  
E: dave@blueactionsports.com

### SOUTHERN CALIFORNIA

SoCal, So. NV, AZ  
**James Akers**  
P: 760.815.9403  
E: jamesbarak@earthlink.net

### PACIFIC NORTHWEST

ID, WY  
**Tom Kern**  
P: 503-575-6654  
E: thmskern@gmail.com

### Megan Fulton

P: 503-860-8997  
E: fulton.megan@gmail.com

## GLOBAL DISTRIBUTORS

### AUSTRALIA

SNOW BIKE SKATE H2O  
**Mission Sports**  
Contact: Chuck Warner  
Tel: 03 9581 5444  
info@missionsports.com.au  
missionsports.com.au

### AUSTRIA

SNOW SKATE H2O  
**Fun Factory**  
**Sports Trading GmbH±**  
Tel: +43 (0) 77 51 / 73 90 - 0  
Info@fun-factory.at  
www.fun-factory.at

### BENELUX

SNOW BIKE SKATE H2O  
**Equipe Trading**  
Contact: Job Verbunt  
Tel: +31 (0)161223436  
info@equipe-trading.com  
equipe-trading.com

### BULGARIA

SNOW  
**XTM-Sports Marketing**  
Contact: Ivan Antonov  
Tel/Fax: +359 2 9631043  
snow@xtmsports.com  
xtmsports.com

### CANADA

SNOW BIKE SKATE H2O  
**Dixie Activewear**  
Contact: David Boucher  
Sales Manager-Canada  
Tel: 514-858-6876  
david@whiteland.com  
whiteland.com

### CHINA

SNOW BIKE SKATE H2O  
**Auric Sports Co. LTD**  
Contact: Joshua Miller  
Tel: +86 10 8476-5445  
miller@auricsports.com

### CROATIA

SNOW  
**AB Original**  
Contact: Ernest Kiseljak  
Tel: +385.1.3630921  
surfmania@surfmania.net

### CZECH REPUBLIC

SNOW BIKE SKATE H2O  
**Snowboard Zezula s.r.o.**  
Contact: Petr Schwarz  
Tel: +420549274516  
info@helmy-bern.cz  
helmy-bern.cz

### FRANCE

SNOW BIKE SKATE H2O  
**Green Door Distribution**  
Contact: Loan Dupont  
Tel: +33(0) 2 99 19 90 90  
loan@greendoor.fr

## GLOBAL DISTRIBUTORS CONTINUED

### GERMANY

SNOW SKATE H2O  
**Element Sports GmbH & Co KG**  
Contact: Willi Schiedermeier  
Tel: +49 (0)8031 941369 - 11  
willi@element-sports.de  
element-sports.de

### GREECE

SNOW  
**Extreme Distribution**  
Tel: +30 6974 598 539  
Info@extremedistribution.gr

### HONG KONG

SNOW BIKE SKATE H2O  
**A3 International Co., Ltd.**  
Contact: Andy Lam  
Tel: +852 2813 8999  
info@a3hongkong.com  
a3hongkong.com

### ITALY

SNOW BIKE SKATE H2O  
**Wave Distribution Srl**  
Contact: Alessandro Grieco  
Tel: +39 011 7801938  
info@wavedistribution.it  
wavedistribution.it

### JAPAN

SNOW BIKE SKATE H2O  
**YTS Amuse Co. Ltd.**  
Contact: Taiki Ida  
Tel: +81 3 6415 6818  
info@ytsamuse.com  
taiki-ida@ytsamuse.com  
ytsamuse.com

### KOREA

SNOW BIKE  
**RAON INC.**  
Contact: Sunho Hwang  
mater@raon-inc.com  
Tel: +82-70-4284-8875  
Fax: +82-2-515-5491

### NEW ZEALAND

SNOW  
**Summit Collective**  
Contact: Andrew Thurman  
Tel: +64 3 443 5410  
andrew@summitcollective.co.nz  
summitcollective.co.nz

### NORWAY, FINLAND, DENMARK

SNOW BIKE SKATE H2O  
**Icon Distribution**  
Contact: Morten Selnaes  
Tel: +47 35 55 51 40  
ms@icondistribution.no  
icondistribution.no

### POLAND

BIKE  
**TAC Sport**  
Contact: Piotr Roszak  
Tel: +48502232911  
info@tac-sport.pl

### RUSSIAN FEDERATION

SNOW BIKE SKATE H2O  
**Mountech**  
Contact: Anna Anufrieva  
Tel: +7-916-774-31-33  
taraskina@mountech.ru  
mountech.ru

### SPAIN

SNOW  
**Azione Sportsystem, S.L.**  
Contact: Chicho Lazaro  
Tel: +34 876 26 94 46  
azione@arrakis.es

### SWEDEN

BIKE SKATE  
**Black Icon Distribution**  
Contact: Patrik Lundin  
Tel: +031-653392  
patrik@frontflip.se  
icondistribution.no

### SWITZERLAND

SNOW SKATE  
**Casoar SA**  
Contact: Reto Niederhauser  
Tel: +41(0)21 925 20 80  
info@casoar.com  
casoar.com  
c-international.biz

### UK

SNOW BIKE SKATE H2O  
**Ultra Sport Europe Ltd.**  
Contact: Andy Steel  
Tel: +44 (0) 1332 813 150  
andy@ultrasporteu.com  
ultrasporteu.com

### UKRAINE

SNOW  
**Proboard Shop**  
Contact: Vladimir Degtyarev  
Tel: +38 044 496 88 28  
mailto:boardshopua@gmail.com  
boardshop.com.ua

## MEN'S SIZING

HAT SIZE	6 3/4 - 7	7 - 7 1/8	7 1/8 - 7 3/8	7 3/8 - 7 5/8	7 5/8 - 7 7/8	7 7/8 - 8
FIT SIZE	S	M	L	XL	2XL	3XL
	54 - 55.5 cm 21.25" - 21.85"	55.5 - 57 cm 21.85" - 22.44"	57 - 59 cm 21.85" - 22.44"	59 - 60.5 cm 23.23" - 23.82"	60.5 - 62 cm 23.82" - 24.41"	62 - 63.5 cm 24.41" - 25"

MODEL	CONSTRUCTION	FIT SYSTEM	SIZE OPTIONS
Rollins	ZIP MOLD+		S/M L/XL 2XL/3XL
Weston	ZIP MOLD+		S/M L/XL 2XL/3XL
Watts EPS / Macon EPS	thin SHELL		S/M L/XL 2XL/3XL
Team Macon EPS	thin SHELL		S M L XL 2XL
Team Baker EPS	thin SHELL		S M L XL

## JUNIOR TEAM

FIT SIZE	S	M	L
	51.5 - 53 cm 20.28" - 20.87"	53.5 - 55 cm 21.05" - 21.65"	55.5 - 57 cm 21.85" - 22.45"

MODEL	CONSTRUCTION	FIT SYSTEM	SIZE OPTIONS
Diablo / Diabla	thin SHELL		S M L

## WOMEN'S SIZING

# SIZE CHART

HAT SIZE	6 1/2 - 6 3/4	6 3/4 - 7	7 - 7 1/8	7 1/8 - 7 3/8
FIT SIZE	XS	S	M	L
	52 - 54 cm 20.47" - 21.25"	54 - 55.5 cm 21.25" - 21.85"	55.5 - 57 cm 21.85" - 22.44"	57 - 59 cm 22.44" - 23.23"

MODEL	CONSTRUCTION	FIT SYSTEM	SIZE OPTIONS
Hepburn	ZIP MOLD+		XS/S M/L
Bristow	ZIP MOLD+		XS/S M/L
Lenox / Brighton EPS	thin SHELL		XS/S M/L
Team Muse	thin SHELL		S M L

## JUNIOR SIZING

FIT SIZE	S/M	M/L
	51.5 - 54.5 cm 20.27" - 21.45"	53 - 56 cm 20.86" - 22.04"

MODEL	CONSTRUCTION	FIT SYSTEM	SIZE OPTIONS
Bandito / Bandita	thin SHELL		S/M M/L

## KIDS SIZING

FIT SIZE	XS/S	S/M
	51 - 53 cm 20.07" - 20.87"	53 - 55.5 cm 20.87" - 21.85"

MODEL	CONSTRUCTION	FIT SYSTEM	SIZE OPTIONS
Camino / Camina	ZIP MOLD+		XS/S S/M
Weston Jr. / Bristow Jr.	ZIP MOLD+		XS/S S/M

# MENS

ROLLINS  
pg 22



WESTON  
pg 26



WATTS  
pg 32



MACON  
pg 36



TEAM BAKER  
pg 44



TEAM MACON  
pg 42



# MENS GOGGLES

EASTWOOD  
pg 12



JACKSON  
pg 16



# WOMENS

HEPBURN  
pg 24



BRISTOW  
pg 28



LENOX  
pg 34



BRIGHTON  
pg 38



TEAM MUSE  
pg 46



# WOMENS GOGGLES

MONROE  
pg 14



JUNO  
pg 18



# LINE-AT-A-GLANCE

# LINE-AT-A-GLANCE

## JUNIOR BOYS

BANDITO  
pg 56



DIABLO  
pg 60



CAMINO  
pg 64



WESTON JR  
pg 68



## JUNIOR BOYS GOGGLES

SAWYER  
pg 50



BREWSTER  
pg 54



## JUNIOR GIRLS

BANDITA  
pg 58



DIABLA  
pg 62



CAMINA  
pg 66



BRISTOW JR  
pg 70



## JUNIOR GIRLS GOGGLES

SCOUT  
pg 52



BREWSTER  
pg 54



**bern**  
EST. 2004

THANK YOU FOR YOUR SUPPORT!



LINDSEY JACOBELLIS  
PHOTO COURT LEVE



**DESIGNED AND DEVELOPED IN MASSACHUSETTS, USA**

